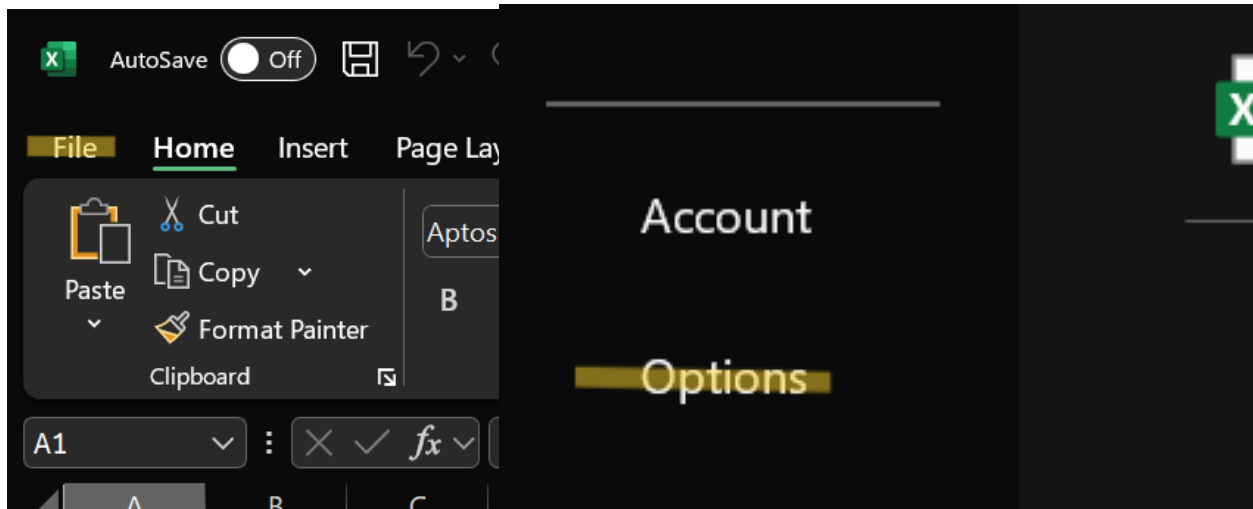
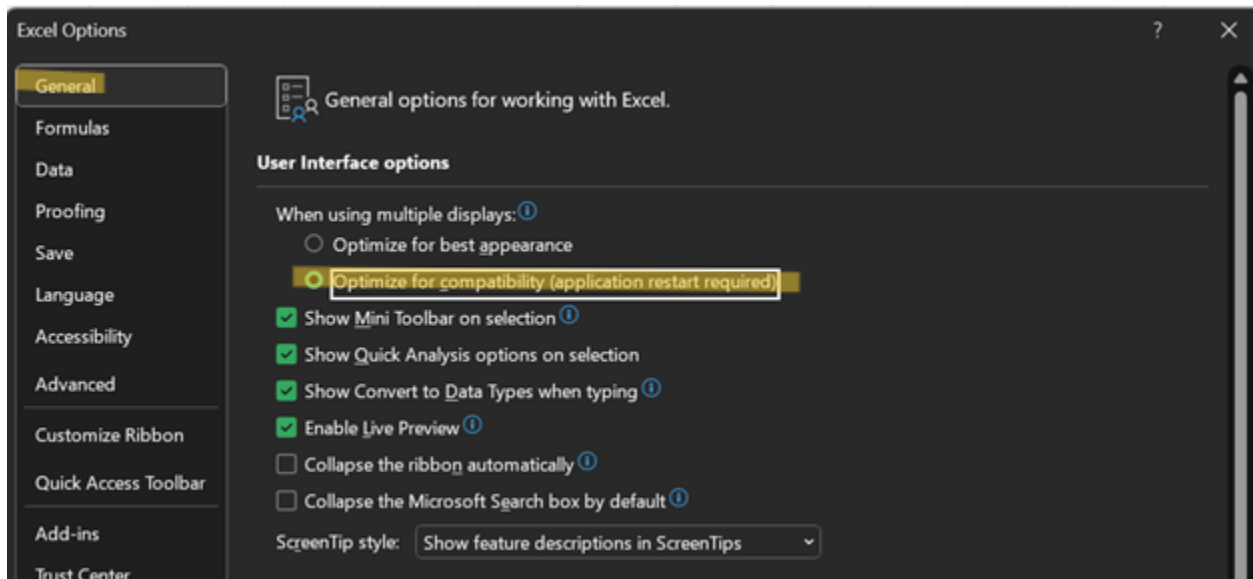


How to correct settings for VSTO Workbook creation:

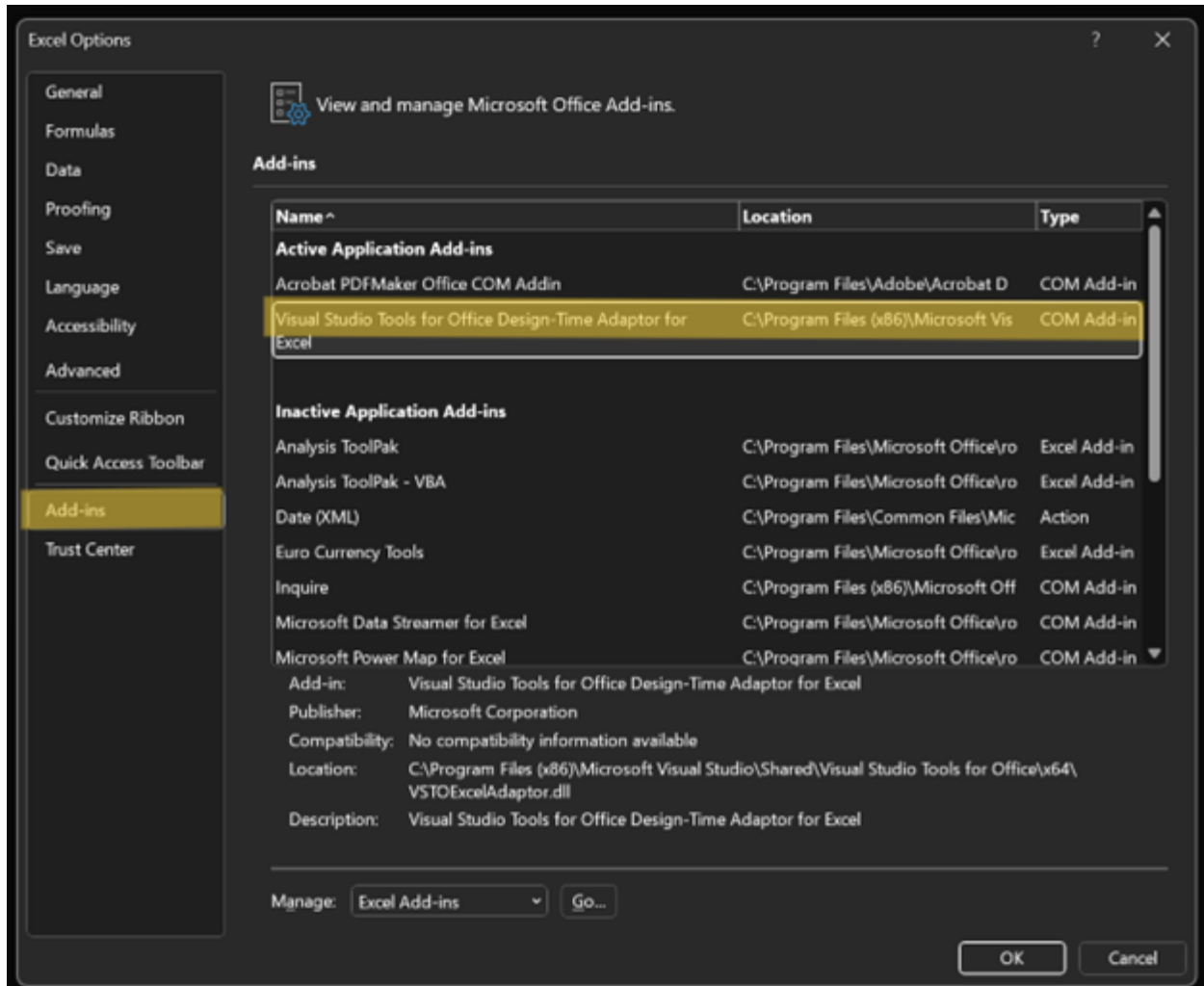
1. **Prior to opening Visual Studio for the first time (if you have already opened it try a different lab computer), open Excel:** you'll want to click on File in the upper left-hand corner, then select options in the lower left-hand corner.



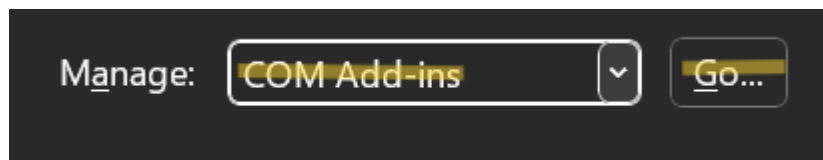
2. Next, you'll check to make sure you're on the General tab of Excel Options and change the multiple displays setting to "Optimize for compatibility".



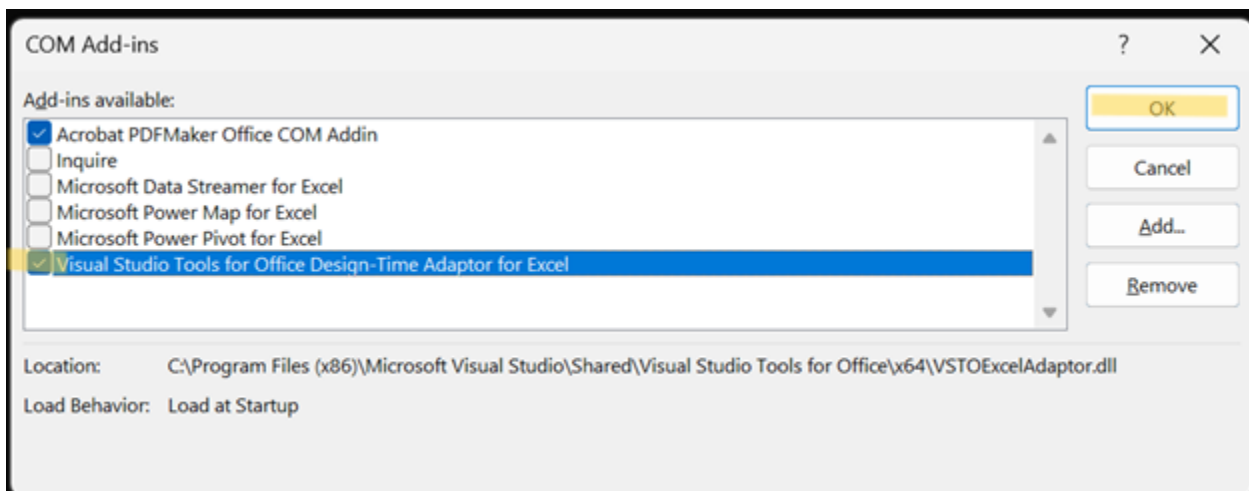
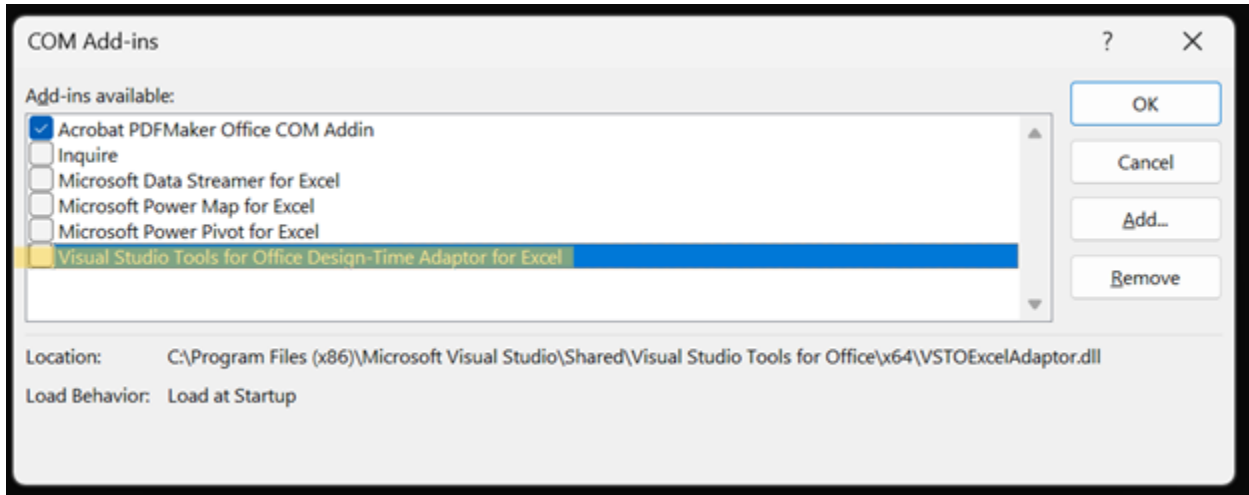
- Once you've completed the Optimization settings change you can go down and click on Add-ins. You should see "Visual Studio Tools for Office Design-Time Adaptor for Excel" in the list of active or inactive Add-ins.



- From there, regardless of whether or not the "Visual Studio Tools for Office Design-Time Adaptor for Excel" Add-in is marked as active, you will need to click on the box at the bottom next to "Manage:" and select COM Add-ins, then click "Go".



5. Once the COM Add-ins Dialogue comes up, you will check the box for Visual Studio Tools if it is unchecked then click OK, and if it is checked already, you will need to uncheck it, click OK, and repeat the last two steps again to re-open the dialogue, re-check the box, then hit OK.



6. Once these steps have been completed you should be able to follow your normal tutorial to create a NEW Excel VSTO Workbook (making sure to check the box visible below and move the workbook location to either your documents or desktop) (**If you do not create a NEW workbook, the instructions may not work**)



7. Once back in Visual Studio, make sure to change the Display settings as described by Visual Studio, or you may still receive the blue screen error.

